

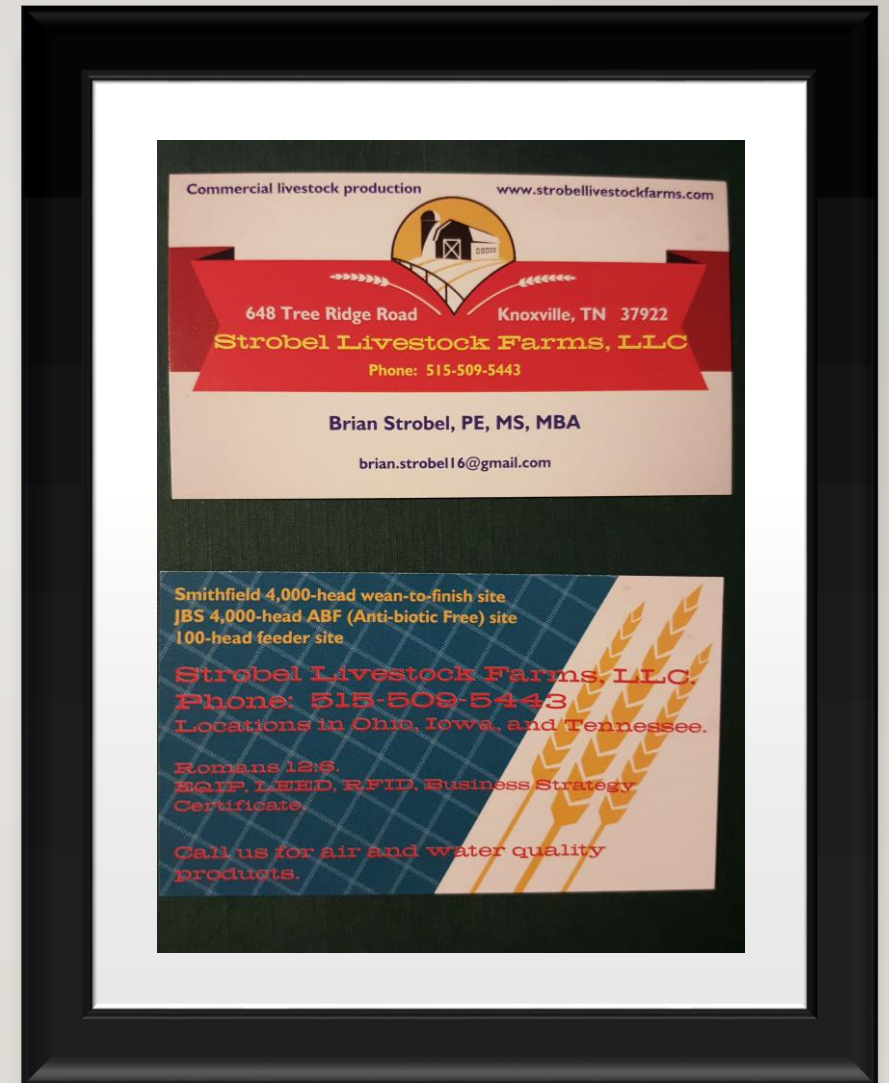
# MAINTENANCE OF WEAN-TO-FINISH AND FINISH SITES

---

Brian Strobel

Midwest Pork Conference

December 4, 2018



## KEY POINTS

---

Outline.

- Concrete slats—maintain 1” gap. Want dry floors
- Rust—power washing...feed motors/swinging waterers/air--fans
- Mechanical/moving parts—flex auger
- Technology/electrical-REAP, IR sensors/halos



## CONCRETE SLATS

---

What is going on here?

How can we lessen/minimize it?



Courtesy: Andy at Altenburg Construction



## LINTEL DAMAGE

---

What do we do next?

How can we prevent this?



Courtesy: Andy at Altenburg Construction



## DEEP PIT BUILDING

---

Post and lintel collapse

How can we prevent this?



Courtesy: Andy at Altenburg Construction

# FEEDERS AND SLATS

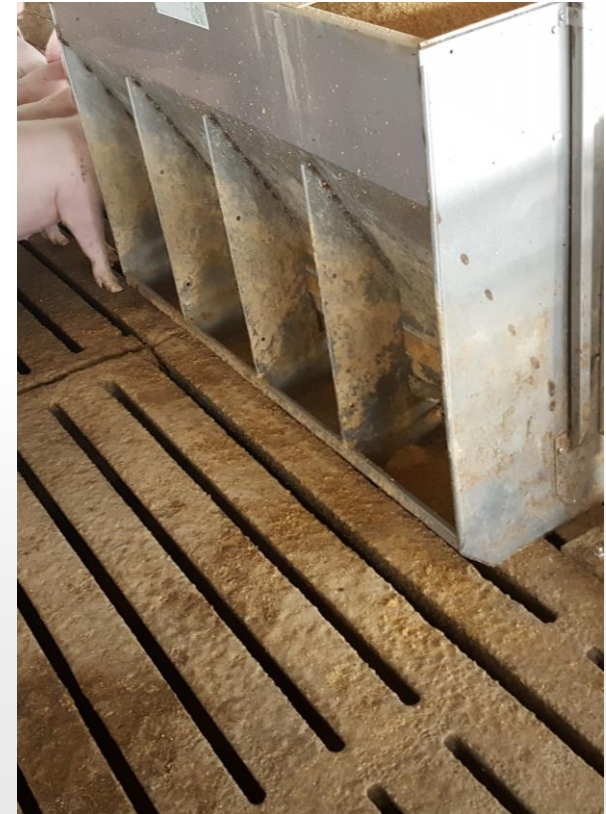
---

What do you see here?

How can we prevent this?

Is this a wet/dry or dry feeder?

Should every feeder have a slat mat under it?





# PRESSURE WASHING

---

Are these dry feeders?

What steps do you take to stage the barn to pressure-wash?

1. Pre-soak
2. Empty feeders
3. Prep gates and feeders





# PRESSURE WASHER

---

What pressure do you want?

What capacity?

How much time do you have to wash each barn?

How many feet of hose do you have?





## HIGH/LOW THERMOMETER

---

Why do we need this, especially for wean pigs?

What is usually the coldest time of the day?





# ROOM/BARN CONTROLLERS

Manage the feed delivery and air environment.

Do you know how to change settings on your controller?





## GASOLEC M8 BROODERS FOR WEAN-TO-FINISH

---

Keep heat near the floor where the pigs are.

I don't want to heat the entire vertical space in the barn.



*Gasolec M8 Heater*





# CURTAIN MACHINE

---

What is right or wrong in this photo?

How often are you greasing your curtain machines?





# TUNNEL CURTAIN

---

What happened here?

How do we fix it? Pulley, rope, cable slippage

What priority is it?



## FEED BINS

---

Safety first before climbing the ladder.  
Is it dry, windy, are you in a hurry?

Are the bin pads clean?

Which slides are open?

How much feed do you have in each  
bin?





## FEED MOTORS

---

Common replacement item.

Do you run-to-failure, or do you have a replacement schedule?





## DAILY PEN CHECKING

---

Do I have swing gates?

Do I check each feeder and nipple?

Am I getting deads removed daily?

Do I lock doors?





## PIG BEHAVIOR

---

Why are they laying in this pattern?

What does it mean?

What type of waterers are we using?

Do we have bubble-wrap?

Do we have a wean-to-finish mat?



## SITE AESTHETICS

---

How can I make the outside more attractive? Our neighbors are seeing our operation.

How often do I mow/trim?

Am I baiting outside?

Do I have equipment left outside?





# THANK YOU

WHAT QUESTIONS DO YOU  
HAVE?

[BRIAN.STROBEL16@GMAIL.COM](mailto:BRIAN.STROBEL16@GMAIL.COM)

MOBILE: 515-509-5443